

INVITATION FOR BIDS
MADISON COUNTY, MISSISSIPPI
CHURCH ROAD OVERLAY & WIDENING

Notice is hereby given that the Madison County Board of Supervisors will receive sealed bids in the Madison County Chancery Clerk's Office, located on the second floor of the Madison County Chancery Courthouse, Rooms 225-227, 146 West Center Street, Canton, Mississippi 39046, until 10:00 A.M., 19 May 2014, for construction of "CHURCH ROAD OVERLAY & WIDENING", together with all appurtenant work required to construct approximately 0.329 miles of overlay and widening, beginning at the intersection of Stribling Road Ext. and Church Road and continuing East to the intersection of Church Road and Calhoun Parkway in Madison County, Mississippi, consisting of all work associated with the construction of said project.

The Information for Bidders Form of Bid, Form of Contract, Plans, and Forms of Bid Bond, Performance Bond and Payment Bond, and other Contract Documents may be examined at the following locations:

CHANCERY CLERK'S OFFICE
CHANCERY COURTHOUSE
ROOMS 225-227
146 WEST CENTER STREET
CANTON, MS 39046

WARNOCK & ASSOCIATES, LLC
158 WEST CENTER STREET
CANTON, MISSISSIPPI 39046

Copies of construction plans and specifications may be obtained at Warnock & Associates, LLC upon payment of Two Hundred Dollars (\$200.00) for each set, none of which is refundable.

All Bids must be sealed and must be marked on the outside of the envelope: **"Bids – CHURCH ROAD OVERLAY & WIDENING"**

All bids must be received by the Madison County Chancery Clerk's Office, located on the second floor of the Madison County Chancery Courthouse, Rooms 225-227, 146 West Center Street, Canton, Mississippi 39046, prior to 10:00 A.M., 19 May 2014.

Each bidder must attend a "Mandatory" pre-bid meeting in the conference room (Room 128) outside the Madison County Board of Supervisors Board Room, located on the First Floor of the Madison County Chancery Courthouse, 146 West Center Street, Canton, Mississippi 39046, at 8:30 A.M., 6 May 2014. The bid of any bidder not attending the pre-bid meeting will be rejected.

Each Bidder must deposit with his Proposal a Bid Bond or Certified Check in an amount equal to five percent (5%) of his Bid, payable to Madison County as bid security. Bidders shall also submit a current financial statement if requested by the County.

Bidders must be qualified under Mississippi Law and show Certificate of Responsibility issued by the Mississippi State Board of Public Contractors. Each Bidder shall write his Certificate of Responsibility Number on the outside of the sealed envelope containing his Proposal. No Bidder may withdraw his Bid within sixty (60) days after the actual date of the opening thereof. The successful Bidder must provide both a Performance Bond and a Payment Bond, each in the amount of 100 percent of the Contract upon execution of the Contract.

The Contract Time is Forty (40) Working Days with a liquidated damages provision of One Thousand Dollars (\$1,000.00) per calendar day thereafter.

The Board of Supervisors reserves the right to reject any and all bids. Dated this the 2nd day of April 2014.

/s/ Karl Banks, Board President

Publish: 17 and 24 April 2014

CHURCH ROAD OVERLAY & WIDENING

MADISON COUNTY, MS

SCALE: 1 IN. = 1,000 FT.

LENGTH DATA

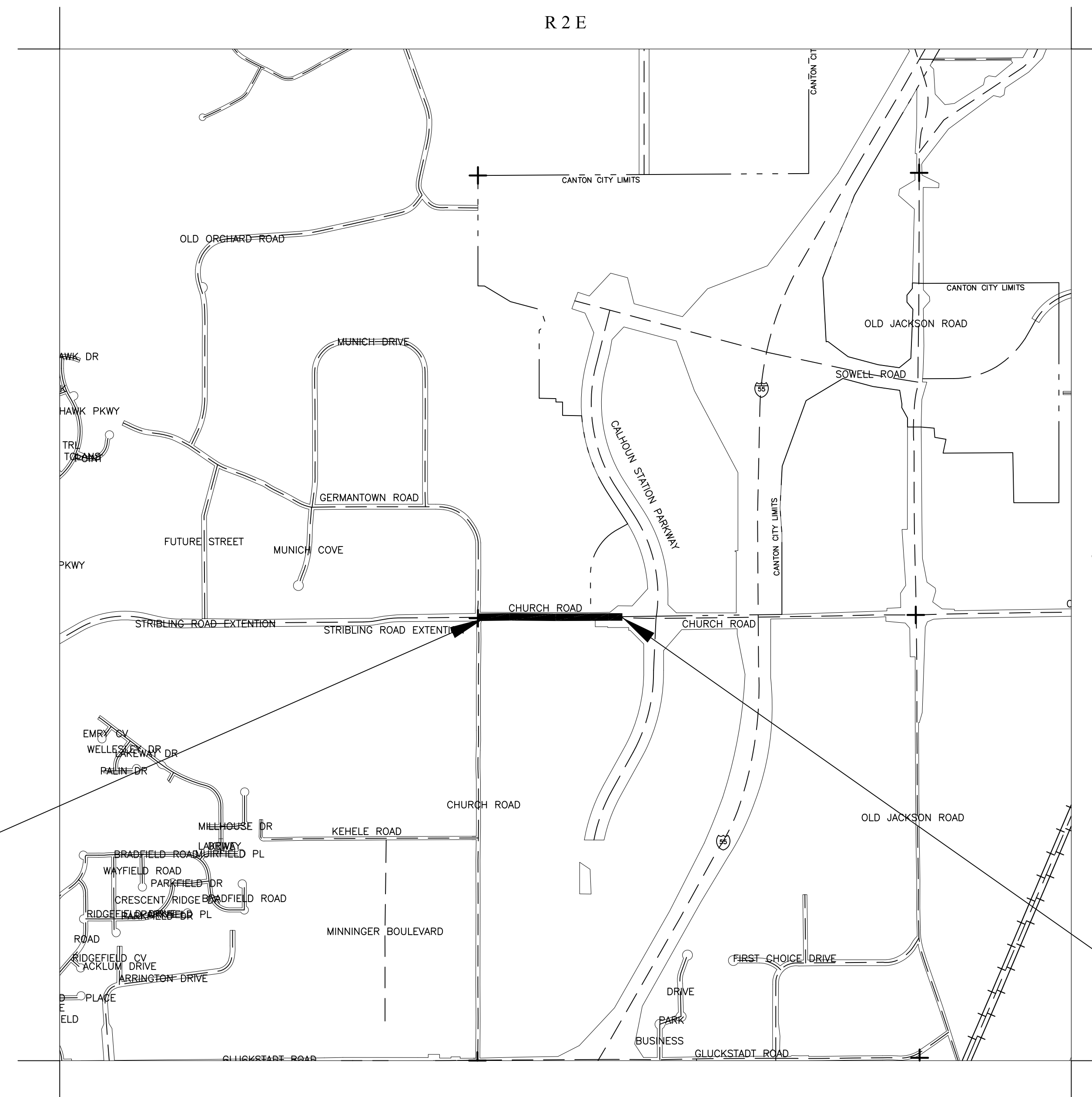
EXCEPTIONS

NONE

EQUATIONS

NONE

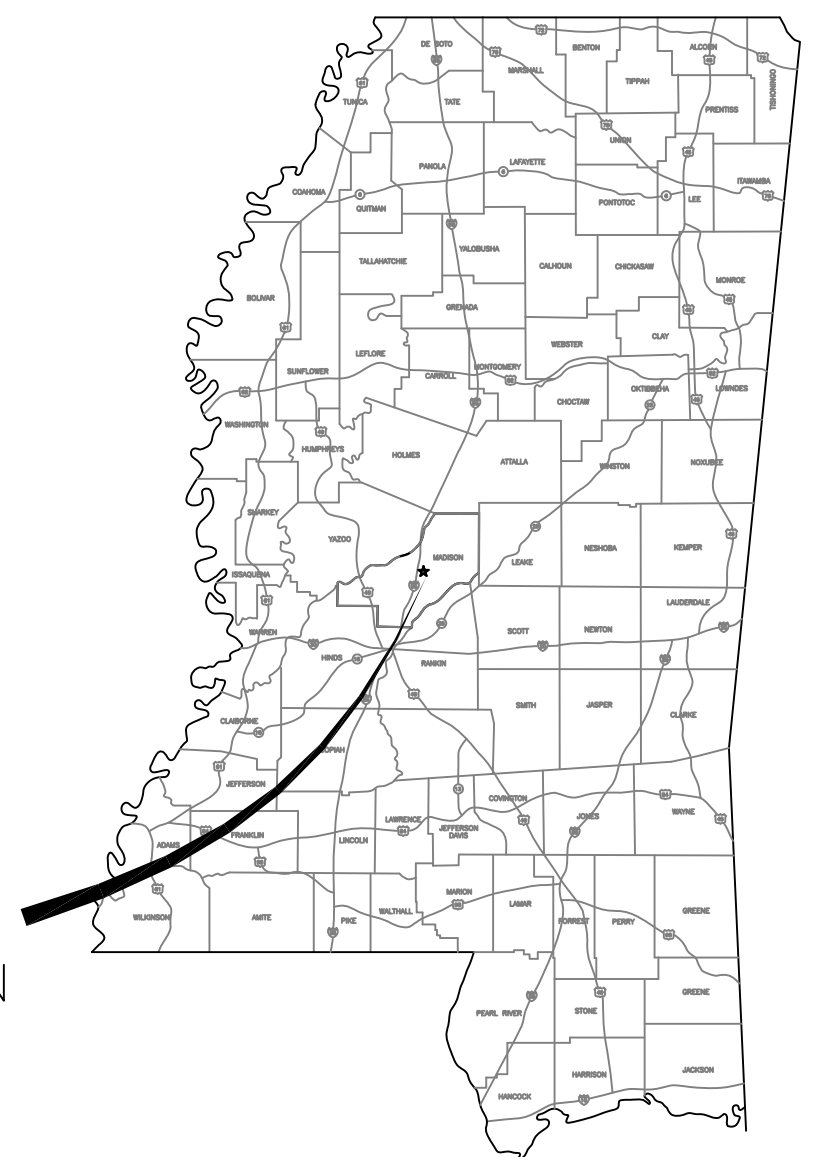
LENGTH OF ROADWAY	1,738.64 FT. = 0.329 MI.
LENGTH OF BRIDGES	0.00 FT. = 0.000 MI.
LENGTH OF PROJECT (NET)	1,738.64 FT. = 0.329 MI.
LENGTH OF EXCEPTIONS	0.00 FT. = 0.000 MI.
LENGTH OF PROJECT (GROSS)	1,738.64 FT. = 0.329 MI.



STA. 0+29.28
BEGINNING OF PROJECT

STA. 17+67.92
END OF PROJECT

PROJECT LOCATION



INDEX

FOR INDEX SEE SHEET NO. 2

CONTRACTOR SHALL VERIFY LOCATIONS FOR ALL UTILITIES BEFORE ANY CONSTRUCTION WORK OR GROUND DISTURBANCE. CONTRACTOR SHALL ASSUME ALL RESPONSIBILITY AND LIABILITY FOR ANY DAMAGES TO UTILITIES OR HARM TO PERSONS OR PROPERTY RESULTING FROM CONSTRUCTION WORK IN THE VICINITY OF UTILITIES OR OTHERWISE.

STANDARD SPECIFICATIONS FOR STATE AID ROAD AND BRIDGE CONSTRUCTION CURRENTLY APPROVED BY THE OFFICE OF STATE AID ROAD CONSTRUCTION OF THE MISSISSIPPI DEPARTMENT OF TRANSPORTATION AND THE FEDERAL HIGHWAY ADMINISTRATION ARE MADE A PART HEREOF FULLY AND COMPLETELY AS IF ATTACHED HERETO, EXCEPT WHERE SUPERSEDED BY THE SPECIAL PROVISIONS, OR AMENDED BY REVISIONS.

THE ENGINEER WILL ESTABLISH, ONE TIME ONLY, REFERENCE POINTS AND BENCH MARKS AND SHALL ASSUME RESPONSIBILITY FOR THE ACCURACY THEREOF. THESE SHALL CONSTITUTE THE FIELD CONTROL BY WHICH THE CONTRACTOR SHALL ESTABLISH AND MAINTAIN ALL NECESSARY CONTROLS FOR THE PROPER LAYOUT AND PERFORMANCE OF THE WORK. BENCH MARKS AND REFERENCE POINTS WILL BE SET BY THE ENGINEER AT DISTANCES NOT TO EXCEED 1,000 FEET FOR ROADWAY WORK.

IF, DURING CONSTRUCTION, THE ENGINEER FINDS IT NECESSARY TO CHANGE THE LINES, DIMENSIONS, THICKNESS, GRADES, SLOPES, SECTIONS OR QUANTITIES OR IF SUCH CHANGES ARE ORDERED FOR ANY OTHER REASON; THE FINAL QUANTITIES WILL BE RECOMPUTED BASED ON THE PLAN CHANGES, AS A RESULT OF AUTHORIZED CHANGES.

BOARD OF SUPERVISORS

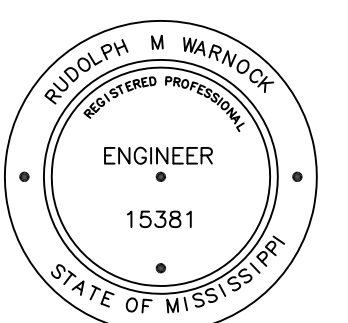
DISTRICT 1	JOHN BELL CROSBY
DISTRICT 2	RONNY LOTT
DISTRICT 3	GERALD STEEN
DISTRICT 4	KARL BANKS, PRESIDENT
DISTRICT 5	PAUL GRIFFIN
ATTORNEY	MIKE ESPY

PREPARED BY:



WARNOCK & ASSOCIATES, L.L.C.
ENGINEERING, MANAGEMENT & PLANNING

2014



PREPARED BY	
COUNTY ENGINEER	DATE

NO.	DATE	BY	APPD	CHURCH ROAD OVERLAY & WIDENING
REVISIONS NATURE				
PROJECT TITLE				
OWNER				MADISON COUNTY MISSISSIPPI
DESIGNED				WARNOCK & ASSOCIATES, L.L.C. ENGINEERING, MANAGEMENT & PLANNING
DATE	SCALE	JOB NO.	JOB NO.	
03/2014	AS SHOWN	6327	6327	
LB	LB	RMY	RMY	
SHEET TITLE				SHEET NO.
COVER				1